



# BEARON AQUATICS

ICE EATERS | OLYMPUS FOUNTAINS | POWER HOUSE AERATION

## POWER HOUSE AERATION

BEARON AQUATICS

**POWER HOUSE AERATION | THE LEADER IN QUALITY, DURABILITY AND PERFORMANCE**



- Our customer friendly, energy efficient Power House Aerators are custom designed to agitate high volumes of water at the surface to maximize exposure of water to the air for ultimate performance.
- Units are suitable for continuous operation and take just a few minutes to install right out of the box. Featuring a quick disconnect power cord that allows for easy replacement.
- Aeration is one of the most widely used tools for maintaining aquatic systems: wastewater treatment, improvement of number and health in fisheries, mosquito control, reduction of nutrient loading, sediment management, water clarity, and algae control.

## 2-YEAR WARRANTY



Bearon Aquatics is a branch of Bearon Manufacturing, LLC. | Listing No. E112360 Complies with UL 778 And CSA C22.2 No. 108



**PROP 65 WARNING:** Crude oil, gasoline, diesel fuel and other petroleum products can expose you to chemicals including toluene and benzene, which are known to the State of California to cause cancer and birth defects or other reproductive harm. These exposures can occur in and around oil fields, refineries, chemical plants, transport and storage operations such as pipelines, marine terminals, tank trucks and other facilities & equipment. For more information go to: [www.P65Warnings.ca.gov/petroleum](http://www.P65Warnings.ca.gov/petroleum).



10233 SOUTH DOLFIELD RD • OWINGS MILLS, MD 21117  
800.243.4741 • [INFO@BEARONMFG.COM](mailto:INFO@BEARONMFG.COM)



# MODELS

All models come with 50' - 150'(115V or 230V) or 200' - 400' (230V only) quick disconnect power cord (Customer specified. Sold in 50' increments only). Comes with (2) 25 ft. hollow braided polypropylene lines with shackles. Everything needed for quick set-up!

## F250



- .25-hp Energy efficient, made in the USA, motor
- 115 or 230 volt
- 2.6/1.3 amps - 50/60 hz.
- Single phase
- 14" Minimum Depth
- Gallons Per Minute 300
- Pond Size: .1 - .25 acre

## F500



- .5-hp Energy efficient, made in the USA, motor
- 115 or 230 volt
- 6.0/3.0 amps - 50/60 hz.
- Single phase
- 21" Minimum Depth
- Gallons Per Minute 884
- Pond Size: .1 - .5 acre

## F750DP



- .75-hp Energy efficient, made in the USA, motor
- 115 or 230 volt
- 7.0/3.5 amps - 50/60 hz.
- Single phase
- 36" Minimum Depth
- Gallons Per Minute 1050
- Pond Size: .75 - 1 acre

## F1000DP



- 1-hp Energy efficient, made in the USA, motor
- 115 or 230 volt
- 8.2/4.1 amps - 50/60 hz.
- Single phase
- 36" Minimum Depth
- Gallons Per Minute 1150
- Pond Size: 1-1.5 Acres

## F1500TP (NEW FOR 2021)



- 1.5-hp Energy efficient, made in the USA, motor
- 230 volt
- 5.0 amps - 50/60 hz.
- Single phase
- 36" Minimum Depth
- Gallons Per Minute 1300
- Pond Size: 1.5 - 2.0 Acres

- Ideal for Aquaculture & Wastewater Applications
- Lightweight, Easy to Install, & Simple to Operate
- Excellent Shallow Water Operations
- Provides for Supplemental Aeration
- Prevents Fish Stress, Mortality and Increases Fish Production
- Helps Prevent Algae Growth
- Good Water Circulation with No Turbidity
- Water Circulation with Little to No Bottom Turbulence
- Minimizes anaerobic zones in bottom water and bottom sediment surface
- Propeller Designed For Maximum Thrust
- High pumping volume degasses the water of nitrogen, carbon dioxide, and hydrogen sulfide while raising dissolved oxygen levels.
- Water flows through the bottom of the shroud and four additional holes, the propeller mixes and forces the water above the surface through our patented Venturi design.
- Salt Water Compatible (Need Anode and Electrolysis Kit)
- Average Oxygen Transfer Rate up to 2.956 Lb. O<sub>2</sub>/HR
- 304 Stainless Steel and Bronze Construction
- Heavy Duty ABS Float
- Motor UL/CSA Recognized & CE Certified
- **2 YEAR WARRANTY**



Quick Disconnect Cord



Down Tube



Screen Kits  
(aka: Turtle Guard)



Brackets



Propellers



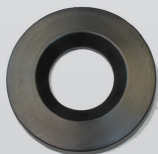
F1500TP Propeller



Mooring Lines



Dual Propellers



Float Ring



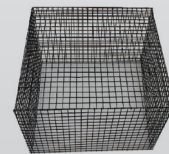
Float



Sacrificial Anode



Electrolysis Kit



Float Cage



Timer



# BEARON AQUATICS

ICE EATERS | OLYMPUS FOUNTAINS | POWER HOUSE AERATION

## POWER HOUSE AERATION

BEARON AQUATICS

### POWER HOUSE AERATION | THE LEADER IN QUALITY, DURABILITY AND PERFORMANCE



- Our customer friendly, energy efficient Aerating Fountains are custom designed to agitate high volumes of water at the surface producing large, even goblets of spray in an eye-pleasing circular V-shaped pattern that can operate in as little as 14” to 18” of water.
- Units are suitable for continuous operation and take just a few minutes to install right out of the box. Featuring a quick disconnect power cord that allows for easy replacement.
- Aeration is one of the most widely used tools for maintaining aquatic systems: mosquito control, sediment management, water clarity, and algae control.
- Aerating Fountains can easily be enhanced by our accent lighting. This option can be added at a later date with our customer friendly, quick connect lighting system.

## 2-YEAR WARRANTY



# POWER HOUSE AERATION

BEARON AQUATICS



Bearon Aquatics is a branch of Bearon Manufacturing, LLC. | Listing No. E112360 Complies with UL 778 And CSA C22.2 No. 108



**PROP 65 WARNING:** Crude oil, gasoline, diesel fuel and other petroleum products can expose you to chemicals including toluene and benzene, which are known to the State of California to cause cancer and birth defects or other reproductive harm. These exposures can occur in and around oil fields, refineries, chemical plants, transport and storage operations such as pipelines, marine terminals, tank trucks and other facilities & equipment. For more information go to: [www.P65Warnings.ca.gov/petroleum](http://www.P65Warnings.ca.gov/petroleum).



10233 SOUTH DOLFIELD RD • OWINGS MILLS, MD 21117  
800.243.4741 • INFO@BEARONMFG.COM



# MODELS

All models come with 50' - 150'(115V or 230V) or 200'- 400' (230V only) quick disconnect power cord (Customer specified. Sold in 50' increments only). Comes with (2) 25 ft. hollow braided polypropylene lines with shackles. Everything needed for quick set-up!



## F500F

- .5-hp Energy efficient, made in the USA, motor
- 115 or 230 volt
- 5/2.5 amps - 50/60 hz.
- Single phase
- 14" Minimum Depth
- Gallons Per Minute 106
- Pond Size: 25' +
- 4' high, 15' diameter
- 75' X 75' Aeration Area



## F1000F

- 1-hp Energy efficient, made in the USA, motor
- 115 or 230 volt
- 7.5/3.7 amps - 50/60 hz.
- Single phase
- 18" Minimum Depth
- Gallons Per Minute 130
- Pond Size: 35' +
- 6' high, 21' diameter
- 100' X 100' Aeration Area

- Excellent Shallow Water Operations
- Lightweight, Easy to Install & Simple to Operate
- Provides for Supplemental Aeration
- Propeller Designed for Maximum Thrust
- Salt Water Compatible (With accessories)
- Water Circulation with Little to No Bottom Turbulence
- Water flows through the bottom of the shroud
- Helps with Fish Stress and Mortality
- 304 Stainless Steel and Bronze Construction
- Heavy Duty ABS Float
- Motor UL/CSA Recognized & CE Certified
- **2 YEAR WARRANTY**

## (2)18 - WATT WHITE LED LIGHTS



- 18 - Brilliant White Light (colored lenses available)
- 115V or 230V - NO Transformer required
- 110 Lumens per Watt
- 2 Fixture feature fits all aerating fountains

## LIGHT KIT: (3) 3 - WATT COLOR CHANGING LEDS



- 115V or 230V - Transformer included
- 7 Colors: red, yellow, green, aqua, blue, purple, & white
- 4 Pattern settings to auto change colors
- Fits all aerating fountains

(Customer friendly Lighting Features can be retrofitted at time of purchase or at a later date!)



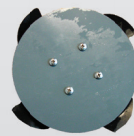
Down Tube



Screen Kits  
(aka: Turtle Guard)



Brackets



Prop and Disk



Colored Lenses



Mooring Lines



Quick Disconnect Cord



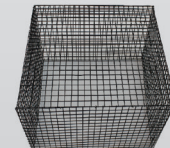
Float



Sacrificial Anode



Electrolysis Kit



Float Cage



Timer